



# DYNAMIC LINE VALVES L.L.C.

## دايناميك لاين لصمامات ش.ذ.م.م

## FLANGED GATE VALVE



## DISCRIPTION

Resilient seat non rising stem gate valves are gate valves with an elastomer lined wedge. The wedge is fully vulcanized with drinking water approved EPDM rubber compound .They are especially used in drinking water application.

Non rising stem gate valves have threads that lift the gate are exposed to the fluid being controlled by the valve. Non rising stem valves are usually used on only clean liquids.

## FEATURES

- Ductile iron wedge, fully vulcanized with EPDM rubber
- Resilient seated in accordance with EN 1074
- Full bore.
- Complete water tightness.
- Free maintenance.
- Low operating torque values.
- Operation by hand wheel & electrical actuator
- According to ISO, UNE, DIN, NF, BS and AWWA standards.
- Fully corrosion resistant construction
- Non Toxic Blue fusion bonded epoxy coating
- Complete with Flanged ends



+971 42677795



+971 42677728



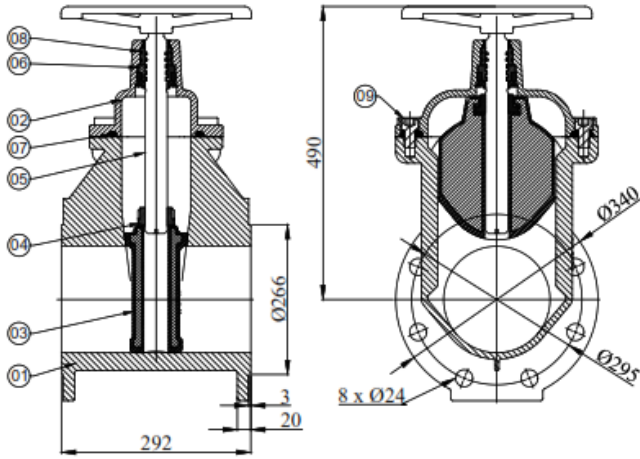
sales@dynamiclinevalves.com



# DYNAMIC LINE VALVES L.L.C.

دايناميك لاين لصمامات ش.ذ.م.م

## DESIGN PROCEDURE



- Design in accordance with EN174-1 & 2
- Service pressure 10-16 bars
- Painting: externally and internally, epoxy coated (300 microns)
- Vulcanized EPDM with shore hardness compliant to 70-75 shores.

## SPECIFICATIONS

BODY & BONNET	EN GJS 500/7 (GGG-50)
WEDGE & O RING	EPDM/NBR
SHAFT	SS316/316L/AISI-420
DISTANCE BETWEEN FLANGES	F5/F4
DN	50/1200
PN	10/16/25
COATING	INTERNALLY & EXTERNALLY EPOXY COATED



+971 42677795



+971 42677728



sales@dynamiclinevalves.com