



DYNAMIC LINE VALVES L.L.C.

دايناميك لاين لصمامات ش.ذ.م.م

TILTING DISC CHECK VALVE



DISCRIPTION

The tilting disc check valves are made of 2 piece body, designed to accomplish full flow opening by having the disc pivot or tilt in the flow media. The opening stroke range is much less than that of the conventional swing check valves, therefore reduces opening and closing time critical to controlling flow reversal and reducing water hammer. The full flow area with lower headless ensure valve will operate with the highest efficiency and durability.

FEATURES

- Low Hydraulic Head Loss
- Minimal wear on moving parts
- Drop tight shut-off
- Robust construction
- Minimal maintenance
- Valves can be fitted with bypass on right hand side of body when facing valve inlet.



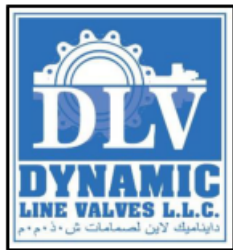
+971 42677795



+971 42677728



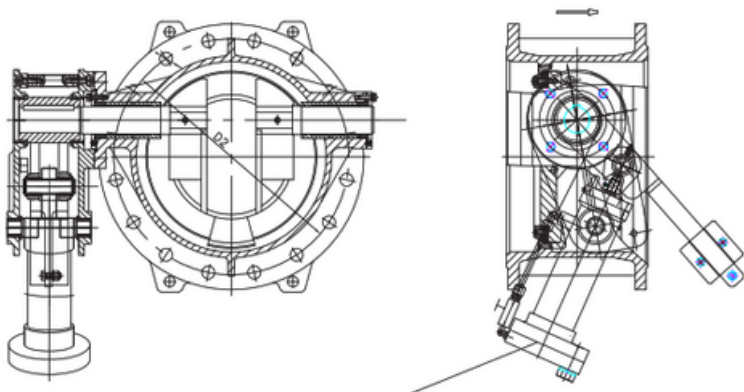
sales@dynamiclinevalves.com



DYNAMIC LINE VALVES L.L.C.

دايناميك لاين لصمامات ش.ذ.م.م

DESIGN PROCEDURE



- Design in accordance with EN12334 Standard.
- Service pressure 10-16 bars
- Painting: externally and internally, epoxy coated (300 microns)

SPECIFICATIONS

BODY & DISC	DUCTILE IRON EN-GJS-500-7 (GGG50)
DISC SEAL RING	EPDM
SHAFT	STAINLESS STEEL
CONNECTION ROD	STAINLESS STEEL
DN	350/1200
PN	10/16
COATING	INTERNALLY & EXTERNALLY EPOXY COATED
HYDRAULIC TEST	IN ACCORDANCE TO EN-12266-1, DIN3230, BS 5154 & ISO 5208.



+971 42677795



+971 42677728



sales@dynamiclinevalves.com